

# Verex Plaza

150 E. Gilman Street, Madison, WI

## First Floor – Suite 1000

**For LEASE**

**\$30.00/RSF**

**Total Available  
5,505 RSF**

Expenses: Lease rate includes a calendar Base Year expense stop.

Minimum Term: 5 yrs.

Load Factor: 15%

### Overview:

Located off the main lobby, this corner office suite provides exceptional lake views, and has 11 private offices, 2 conference rooms, a kitchenette, and open office area.

### To learn more contact:

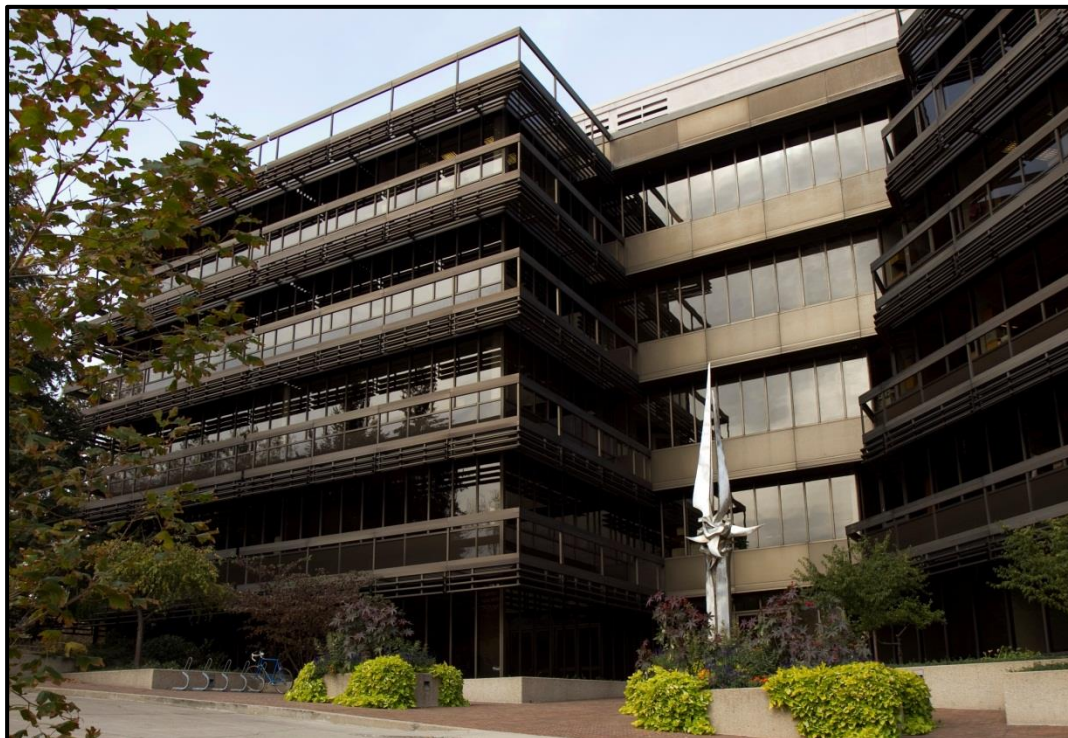
**Lee Ferderer**

Office: 608-255-5060

Email:

lferderer@fioreco.com

Visit our website at  
[www.fiorecompanies.com](http://www.fiorecompanies.com)



### About Verex Plaza

Located in downtown Madison Verex Plaza is a one-of-a-kind Class A office building with spectacular lake views. The building also enjoys views of the nearby State Capitol and vistas of the Mansion Hill Neighborhood.

With its professional, onsite building management, Verex Plaza is home to several notable tenants including Foley & Lardner LLP, one of the nation's largest and most respected law firms.

Verex Plaza offers tenants 105,000 square feet of rentable office space, heated underground parking, and visitor surface parking. Amenities include rotating lobby art, a lakeside cafe, outdoor lakeside patio and a conference center.

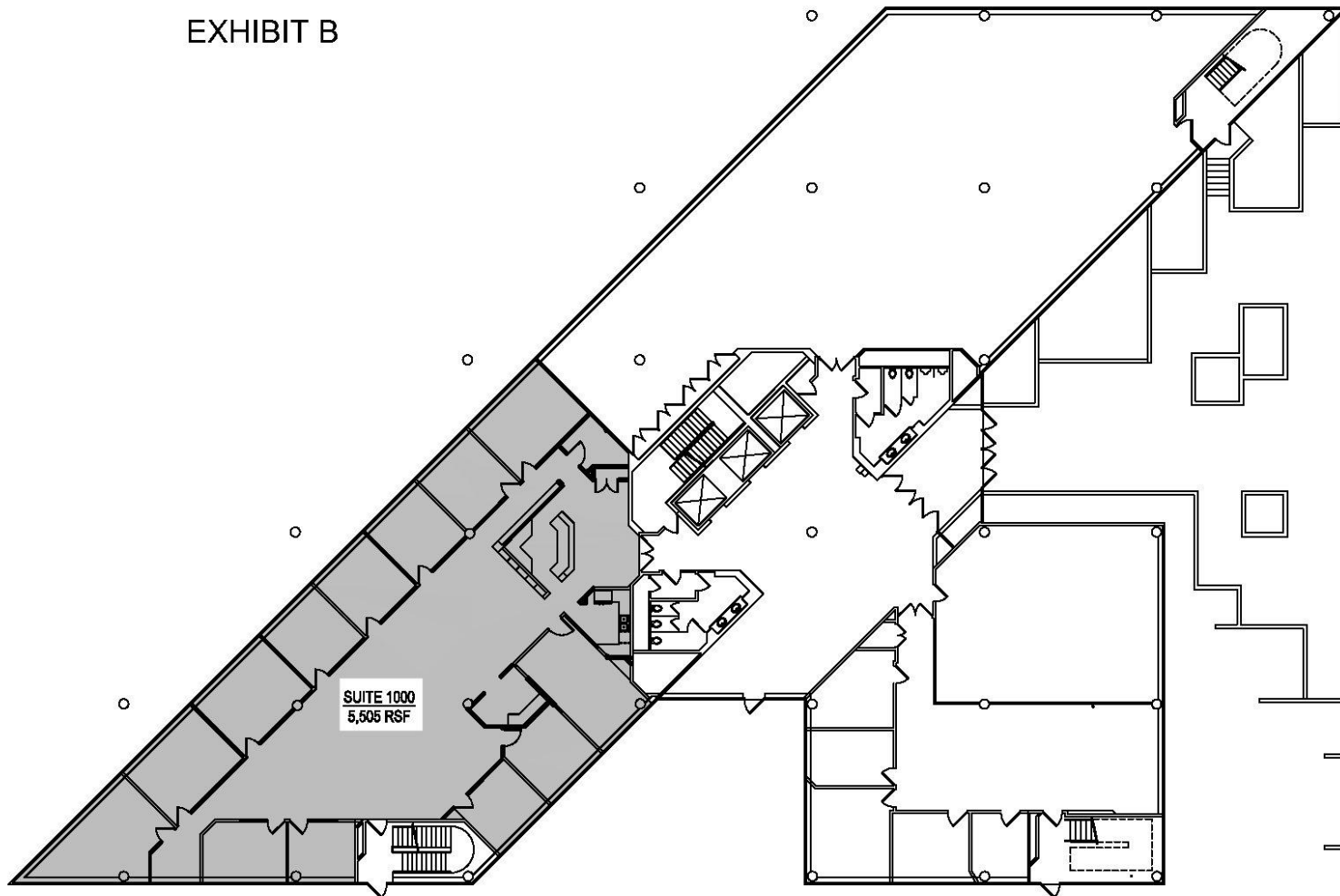


# Verex Plaza

150 E. Gilman Street, Madison, WI

## First Floor – Suite 1000

EXHIBIT B



### VEREX PLAZA Floor 1

150 E. Gilman Street, Madison, WI  
www.fiorecompanies.com  
608.255.5060