

Verex Plaza

150 E. Gilman Street, Madison, WI



First Floor – Suite 1000

For LEASE

\$28.00/RSF

**Total Available
5,632 RSF**

Expenses: Lease rate includes a calendar Base Year expense stop.

Minimum Term: 5 yrs.

Load Factor: 15%

Overview:

Located off the main lobby, this corner office suite.

To learn more contact:

Lee Ferderer

Office: 608-255-5060

Email:

lferderer@fioreco.com

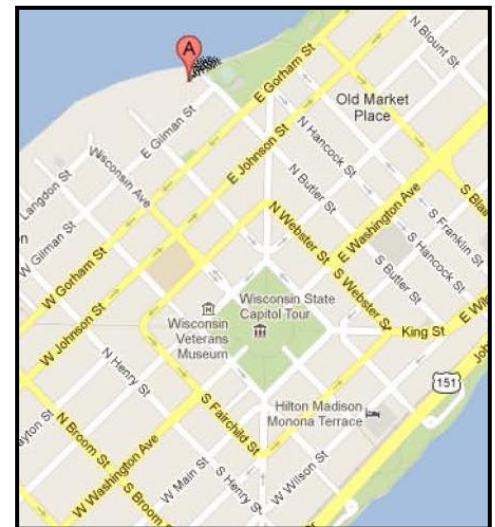
Visit our website at
www.fiorecompanies.com



Located in downtown Madison Verex Plaza is a one-of-a-kind Class A office building with spectacular lake views. The building also enjoys views of the nearby State Capitol and vistas of the Mansion Hill Neighborhood.

With its professional, onsite building management, Verex Plaza is home to several notable tenants including Foley & Lardner LLP, one of the nation's largest and most respected law firms.

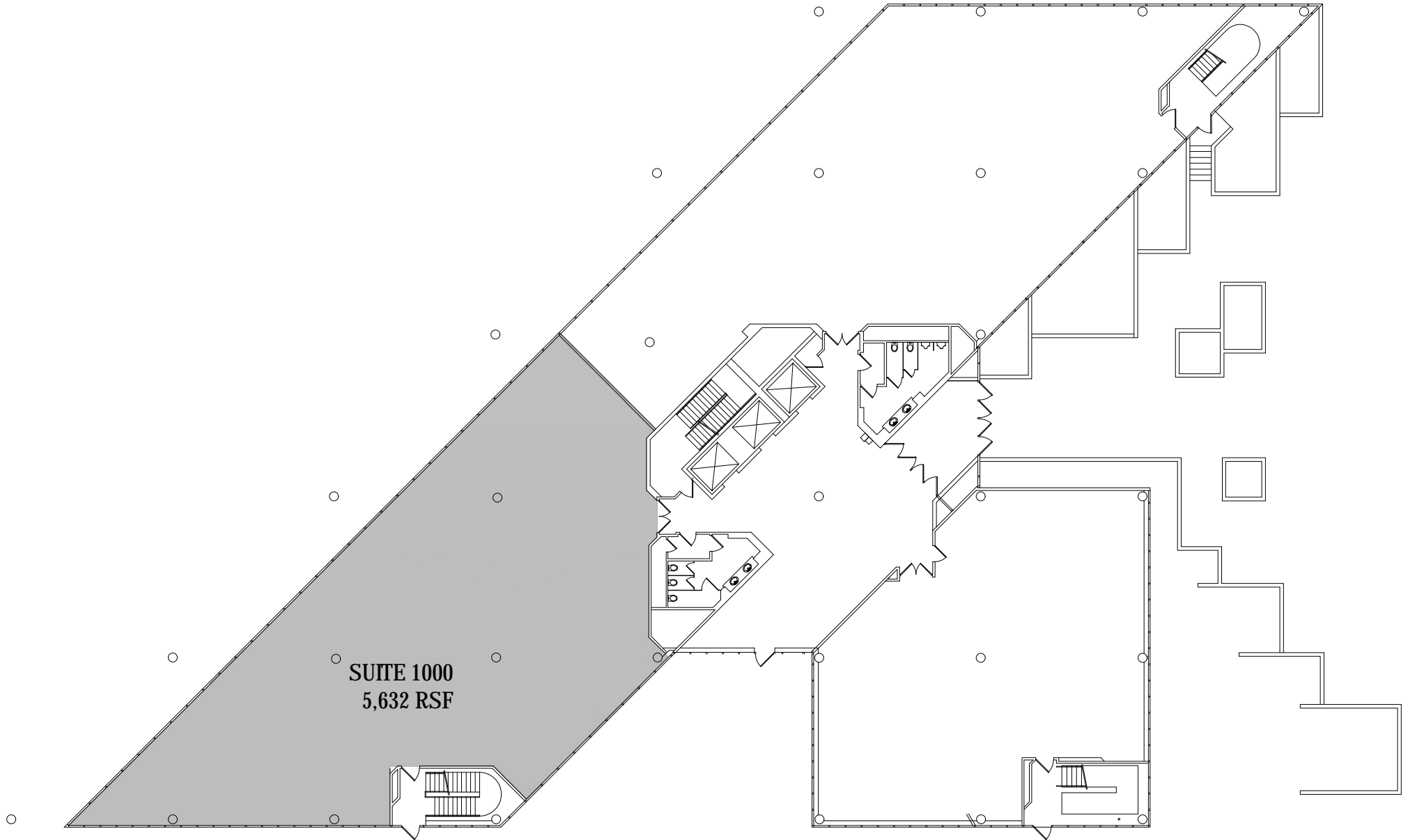
Verex Plaza offers tenants 105,000 square feet of rentable office space, heated underground parking, and visitor surface parking. Amenities include rotating lobby art, a lakeside cafe, outdoor lakeside patio and a newly renovated conference center.



Verex

222 West Washington Avenue, Madison, WI 53703

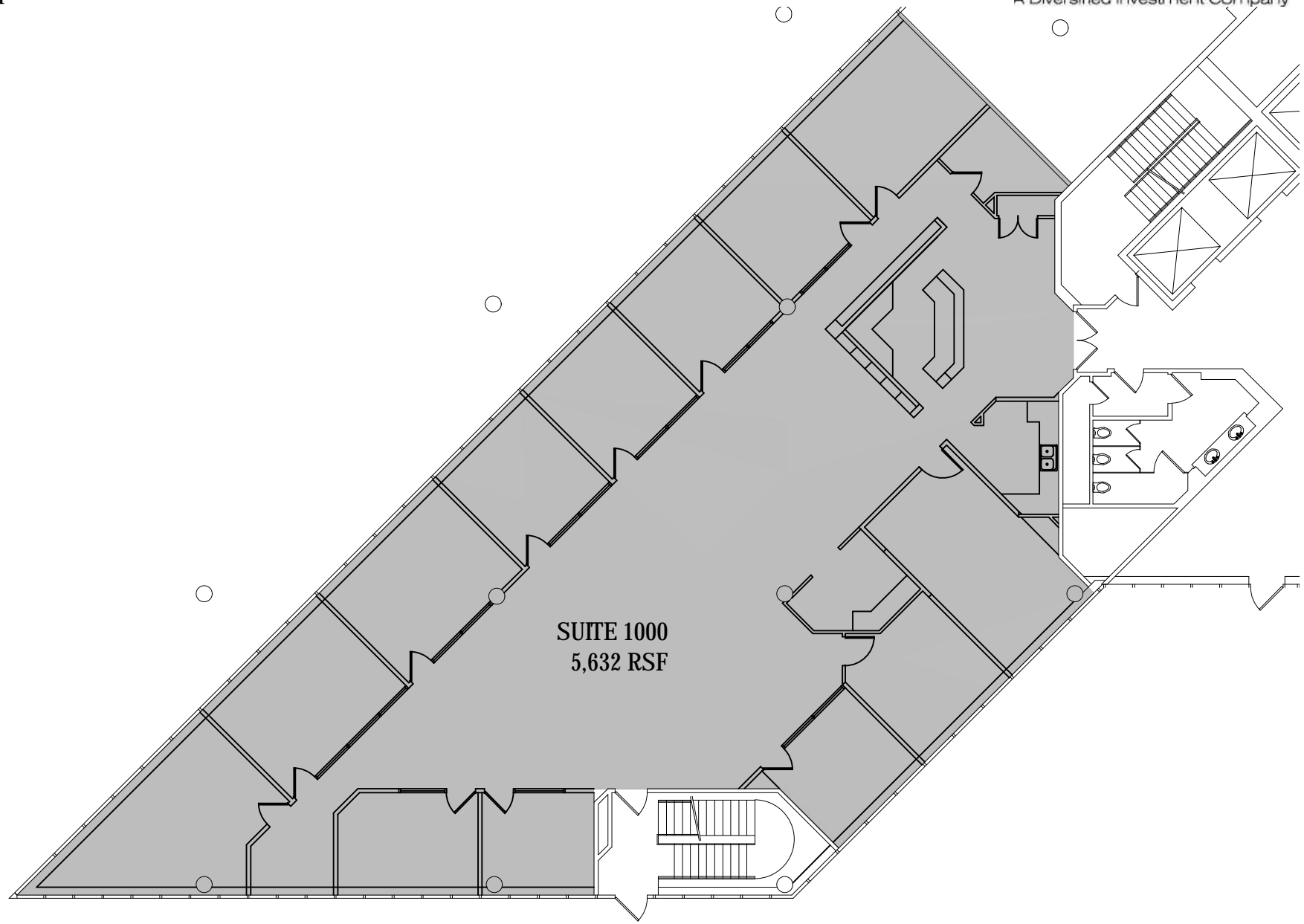
1st Floor Office Space - Suite 1000



Verex

222 West Washington Avenue, Madison, WI 53703

1st Floor Office Space - Suite 1000



SUITE 1000
5,632 RSF