

Knickerbocker Place

2701 Monroe Street, Madison, WI 53711



Retail Space – Suite 210

For LEASE

2701 Monroe St.

Suite 210 – 1,076 SF

\$18.00/SF NNN

2019 CAM -
\$8.22/SF

Minimum Term: 5 years.

To learn more contact:

Lee Ferderer

lferderer@fioreco.com

Lindsay Kruger

lkruger@fioreco.com

608-255-5060

Visit our website at
www.fiorecompanies.com



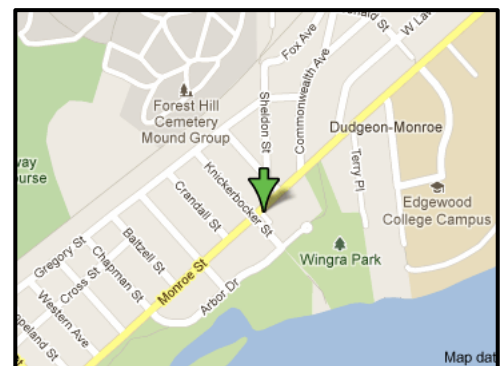
About Knickerbocker Place

Knickerbocker Place on Monroe Street is one of Madison's finest neighborhood retail centers.

Totalling 20,000 sq. ft., Knickerbocker Place offers a great demographic profile with excellent traffic counts, visibility, and on-site parking in the heart of Madison's near west Dudgeon-Monroe and Nakoma neighborhoods.

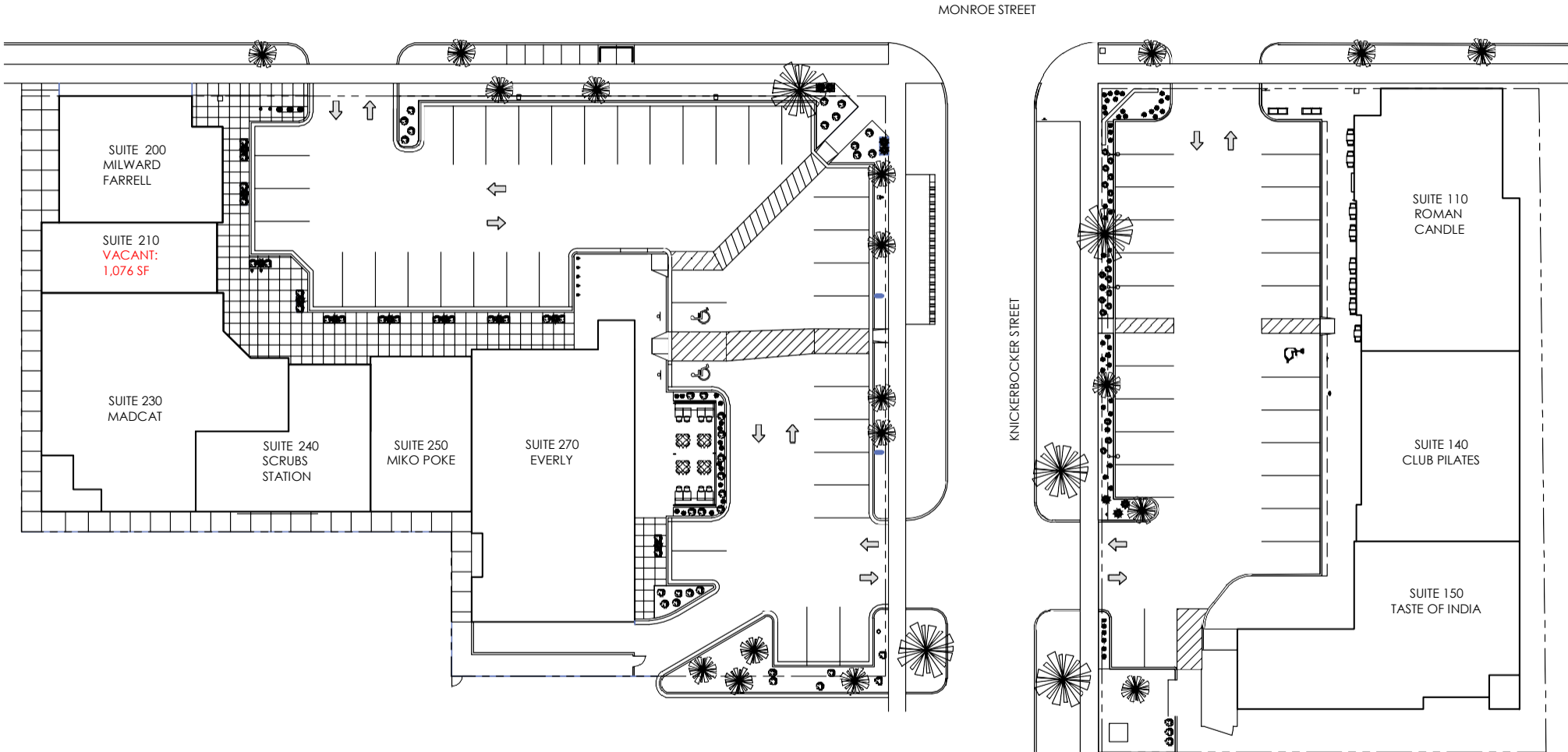
Major tenants include:

- Everly
- Roman Candle
- Millward Farrell Fine Art
- MadCat, Inc.



KNICKERBOCKER PLACE

2623 & 2701 MONROE ST, MADISON, WI 53711

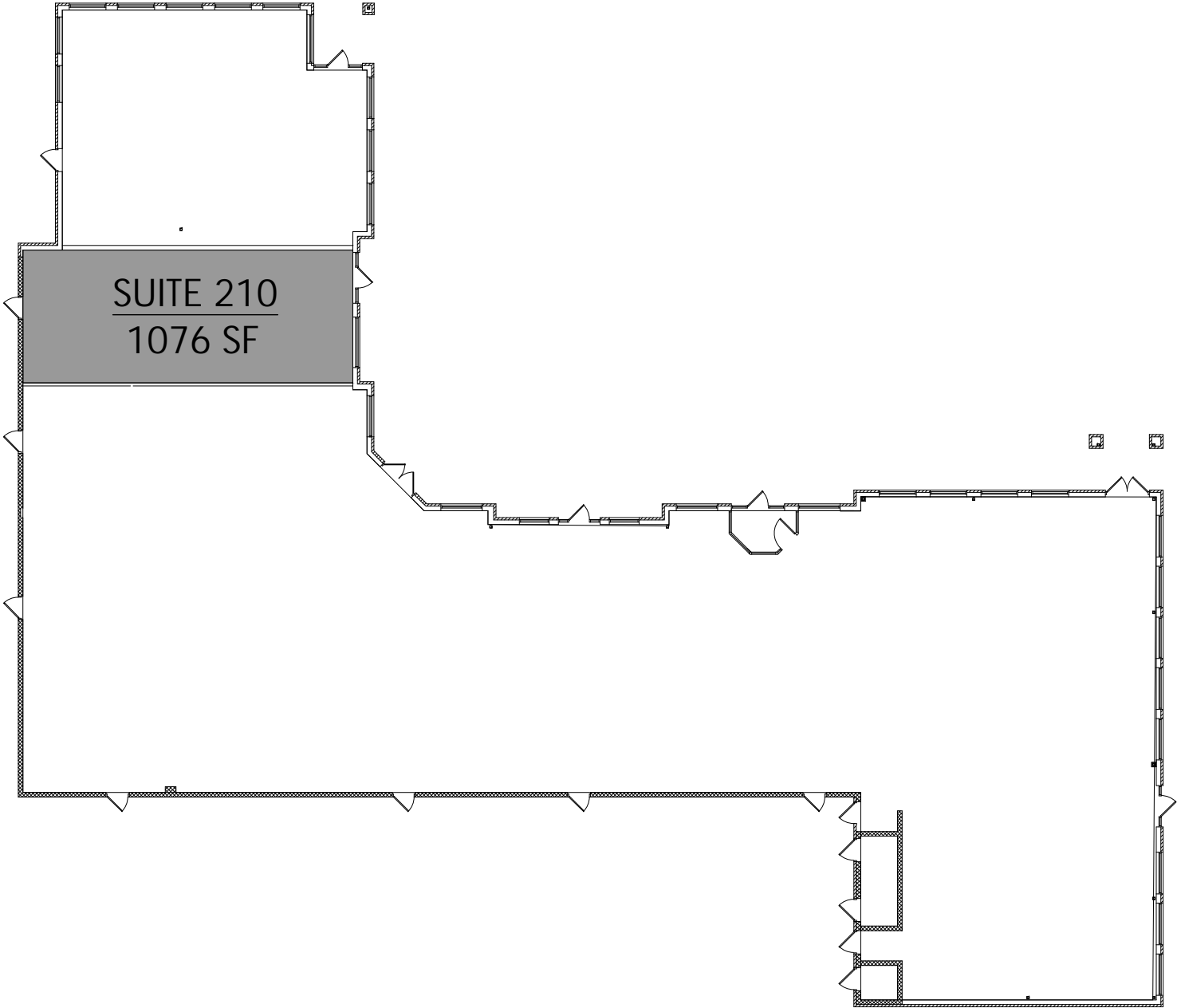


Knickerbocker Place

2701 Monroe Street, Madison, WI 53711

Retail/Office Space - Suite 210

MONROE STREET

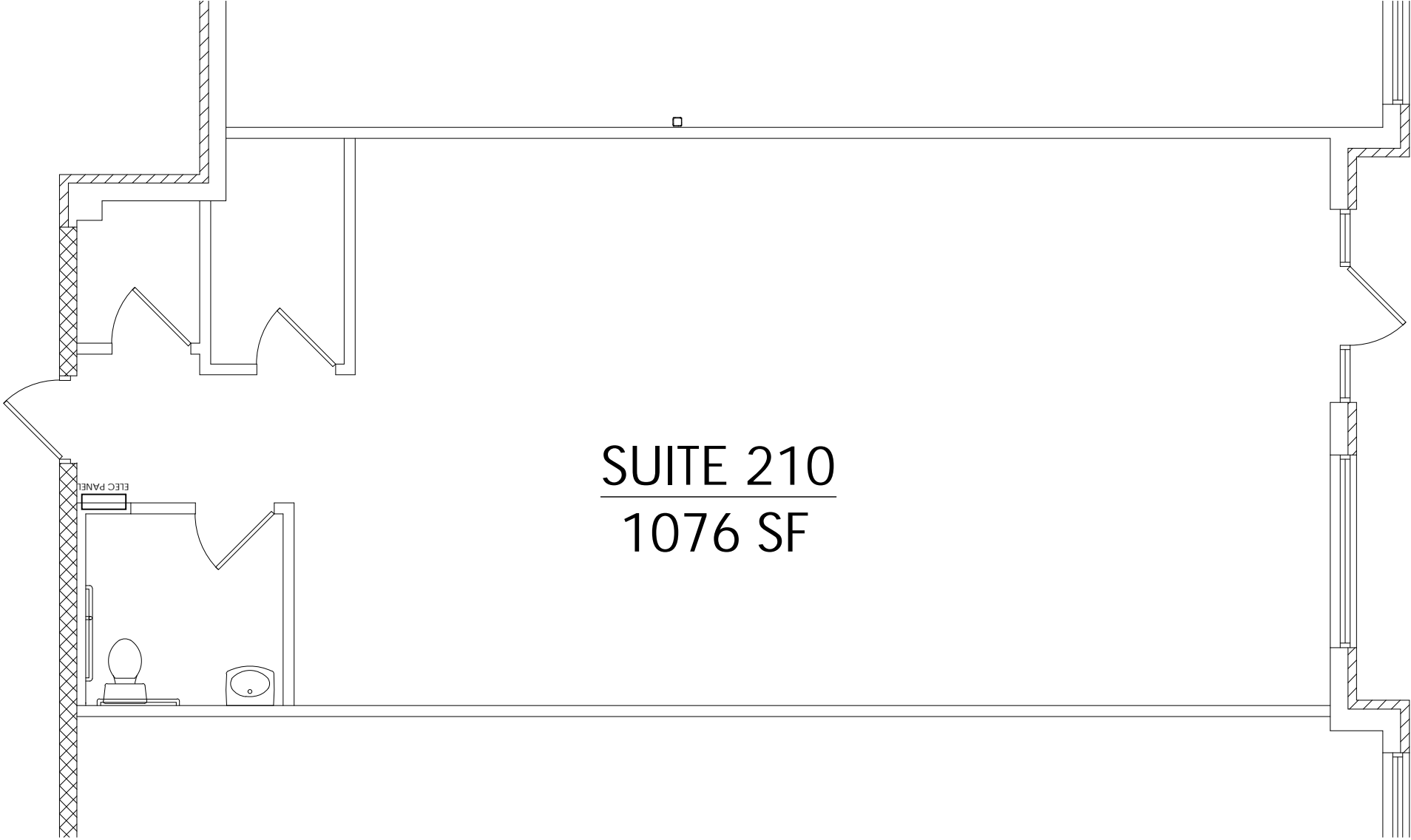


KNICKERBOCKER STREET

Knickerbocker Place

2701 Monroe Street, Madison, WI 53711

Retail/Office Space - Suite 210



SUITE 210
1076 SF