

### Unit 15 Details:

- Size: 840 SF
- Bedrooms: 1
- Bathrooms: 2
- One Bedroom Plus Loft
- Private Patio
- 11' Ceilings
- Private Entrance
- Hard-Surface Flooring
- In-Unit Washer & Dryer
- Central Air
- Dishwasher

### Property Amenities:

- Secured Access
- Private Patio
- Courtyard
- Indoor Bike Storage
- Rooftop Pet Run With Artificial Turf
- Dog Wash Station
- Located Near Bike Paths
- Located On Bus Route
- Close Proximity To UW Hospital Campus

### Additional Amenities:

Fees apply

- Underground Parking
- Dog Friendly (up to 50 pounds)
- Cat Friendly

# LAKEPOINT

commons



Tenant pays utilities (heat/electricity, cable & internet)The building is located on a bus route for easy car-free commuting. Dogs up to 50 pounds and cats are permitted with a \$25/month/pet fee, limit 2 pets/ unit. There is also a non-refundable pet deposit of \$150

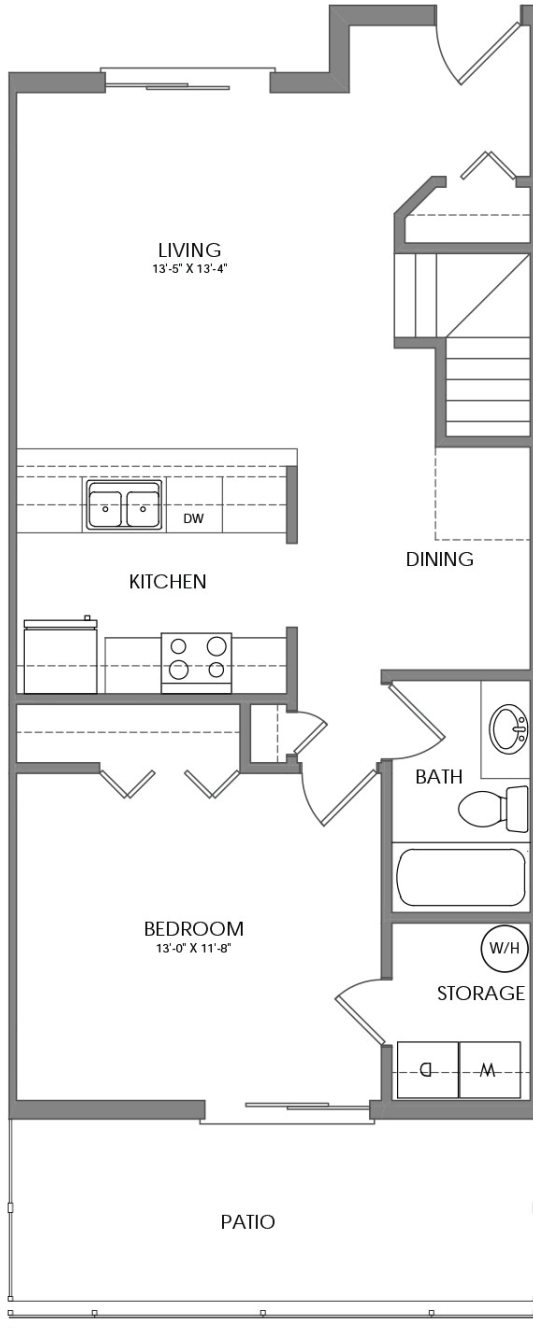
Rental rates, availability, lease terms, deposits, apartment features, amenities and specials are subject to change without notice.

To schedule a showing: Call (608) 255-5060

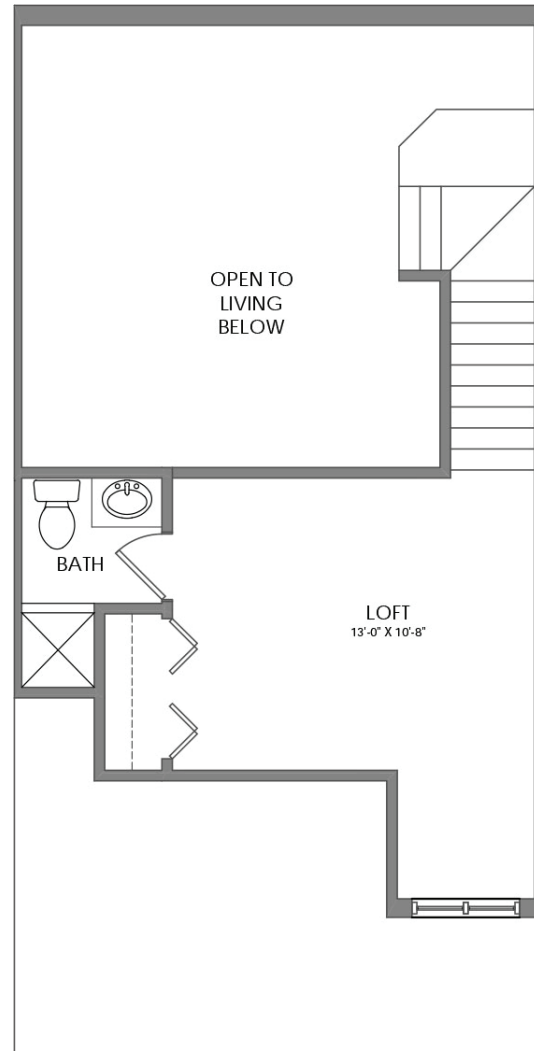
Or email [apartments@fioreco.com](mailto:apartments@fioreco.com)

Visit our website at [www.fiorecompanies.com](http://www.fiorecompanies.com)

Unit 15  
1-Bedroom + Loft Unit  
840 sq ft



1 BEDROOM W/ LOFT  
UNIT LEVEL 1



1 BEDROOM W/ LOFT  
UNIT LEVEL 2