



BUILDING HIGHLIGHTS

VEREX PLAZA | 150 EAST GILMAN STREET
MADISON, WI



OVERVIEW

Located in the picturesque northeast corner of downtown Madison, Verex Plaza provides spectacular views and generous amenities.

DETAILS

TYPE	Office
BUILT/RENOVATED	1975/2020
CLASS	A
SIZE	233,591 SF
TYPICAL FLOOR	25,400 SF
BUILDING HEIGHT	5 Stories
UNFINISHED CEILING	12'

TENANTS

Foley & Lardner
Habush, Habush & Rottier
Wisconsin Housing Preservation Corp.
Coyne, Schultz, Becker & Bauer
Wisconsin Automobile & Truck
Dealers Association
The Fiore Companies

BUILDING HIGHLIGHTS

VEREX PLAZA | 150 EAST GILMAN STREET
MADISON, WI



MARKET LEADING AMENITIES

- Adjacent to Lake Mendota and James Madison Park, allowing unparalleled views and access to the outdoors
- Common area work cafe featuring an exclusive lakeside patio and Canteen Grab n' Go Market
- Lunch service delivered by Relish, featuring a variety of local restaurants, with delivery fees & tips paid by Landlord
- 24-hour secured access
- Heated underground enclosed parking garage with direct elevator access to all floors
- Secured bicycle parking
- Shower and locker facilities
- Professionally managed by The Fiore Companies, with onsite dedicated technicians
- Blocks away from The Capitol Square, Edgewater Hotel & Restaurants, Bradbury's Coffee, and Pinkus McBride Market & Deli

LOCATION

VEREX PLAZA | 150 EAST GILMAN STREET
MADISON, WI



PROXIMITY

JAMES MADISON PARK
& LAKE MENDOTA
Adjacent

PINKUS MCBRIDE
MARKET & DELI
0.2 MILES
5 Minute Walk

BRADBURY'S COFFEE
0.3 MILES
6 Minute Walk

EDGEWATER HOTEL
& RESTAURANTS
0.3 MILES
6 Minute Walk

STATE CAPITOL
0.4 MILES
10 Minute Walk

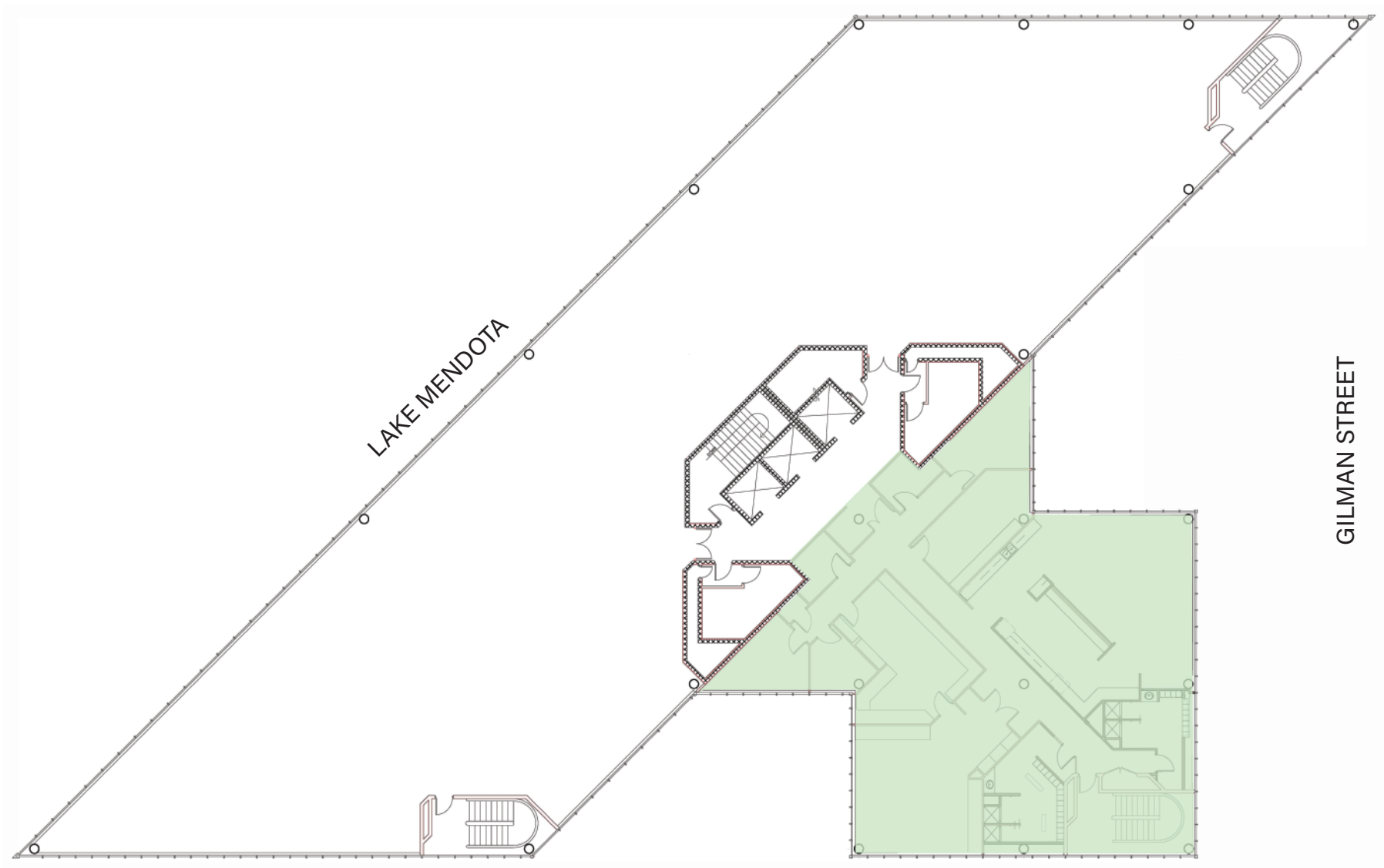
COURTHOUSE
0.7 MILES
17 Minute Walk



fiorecompanies.com | (608) 255-5060 | 

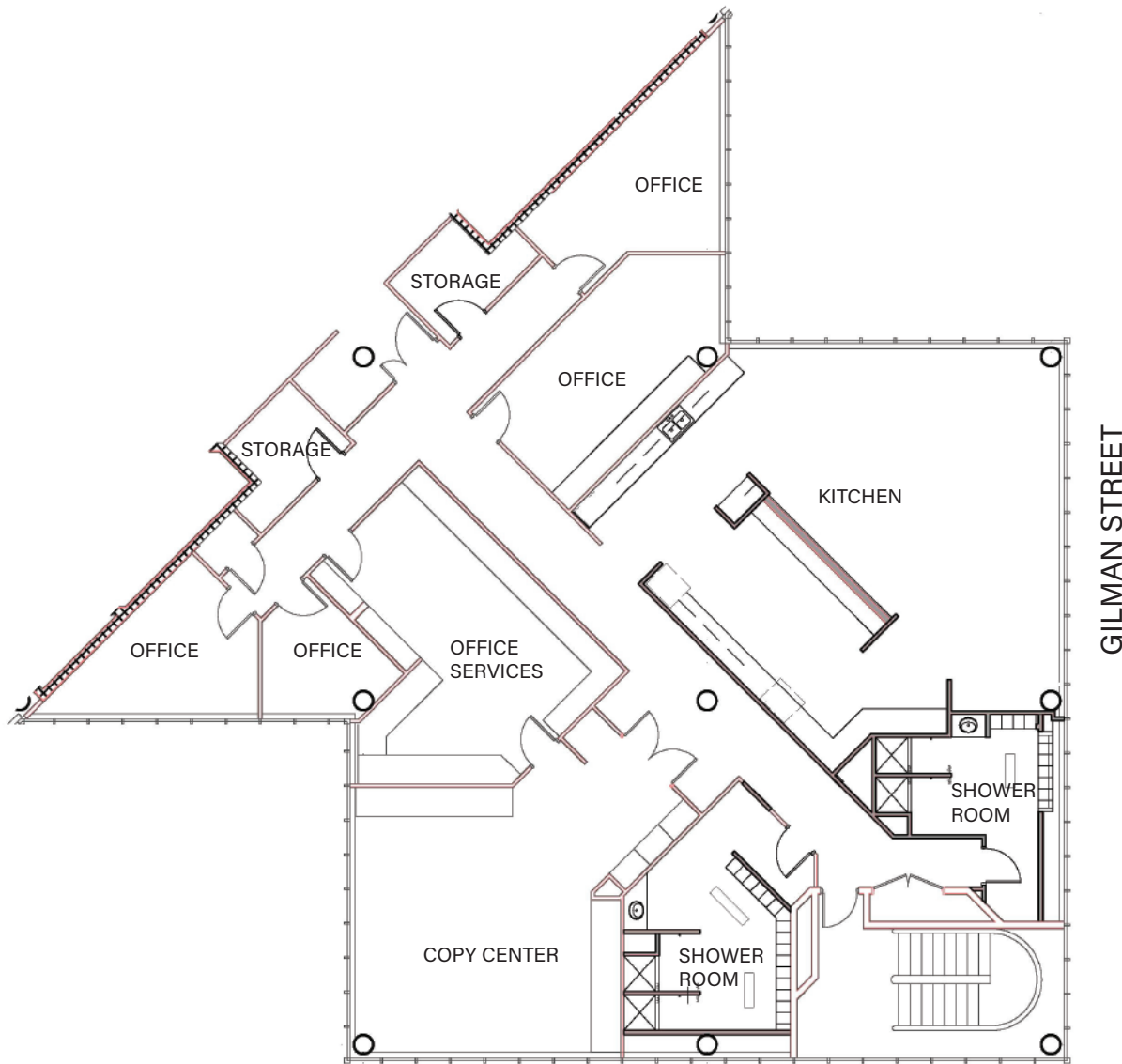
2ND FLOOR OVERVIEW

VEREX PLAZA | 150 EAST GILMAN STREET
MADISON, WI



SUITE 2400 - EXISTING

VEREX PLAZA | 150 EAST GILMAN STREET
MADISON, WI

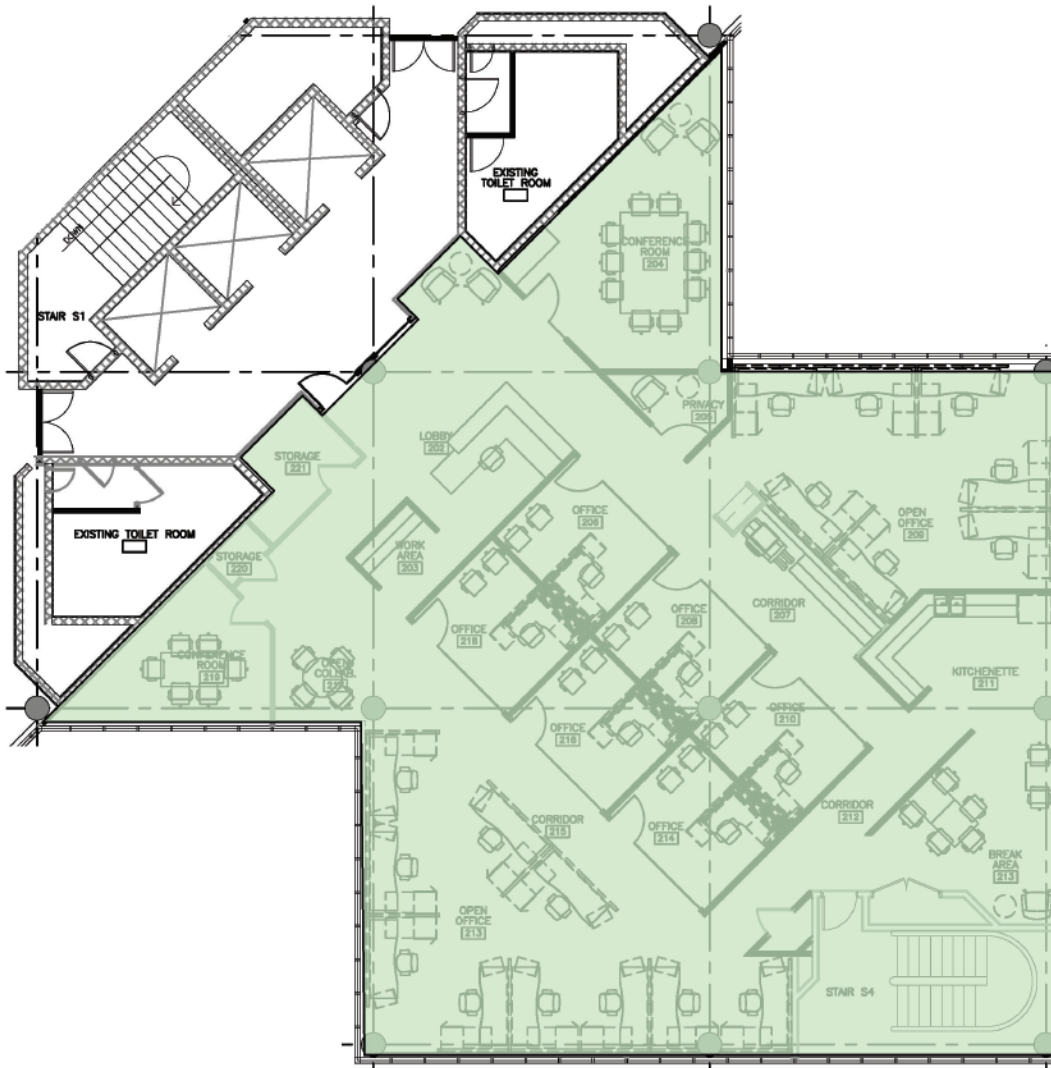


HIGHLIGHTS

SQUARE FEET	5,034
RATE PER SQUARE FOOT	\$32.00 MG
EXTERIOR PRIVATE OFFICES	4
OFFICE SERVICES ROOM	1
KITCHEN/BREAKROOM	1
COPY CENTER	1
SHOWER ROOMS	2
STORAGE ROOMS	2
ADJACENT RESTROOMS	
CAPITOL & LAKE VIEWS	
ABUNDANCE OF NATURAL LIGHT	
AVAILABLE MAY 1, 2025	
TI PACKAGE NEGOTIABLE	

SUITE 2400 - CONCEPTUAL

VEREX PLAZA | 150 EAST GILMAN STREET
MADISON, WI



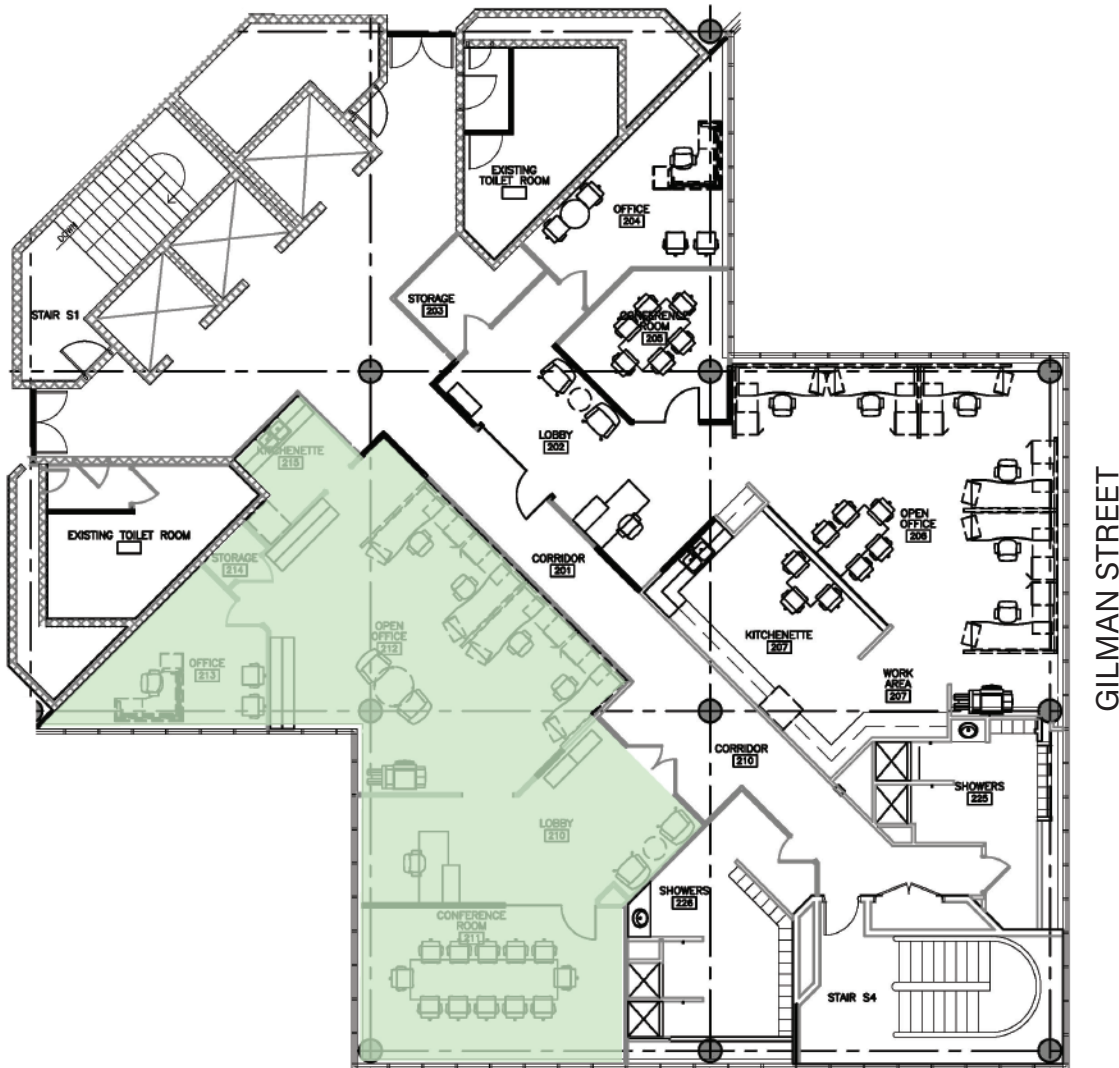
GILMAN STREET

CONCEPT FEATURES

SQUARE FEET	5,034
SHARED OPEN OFFICES	17
INTERIOR PRIVATE OFFICES	6
CONFERENCE ROOM	2
WELLNESS/HUDDLE ROOM	1
KITCHEN/BREAKROOM	1
COMMUNAL WORK AREA	1
RECEPTION/WELCOME	1
DATA/STORAGE ROOM	2
ADJACENT RESTROOMS	
CAPITOL & LAKE VIEWS	
ABUNDANCE OF NATURAL LIGHT	

SUITE 2200 - CONCEPTUAL

VEREX PLAZA | 150 EAST GILMAN STREET
MADISON, WI



CONCEPT FEATURES

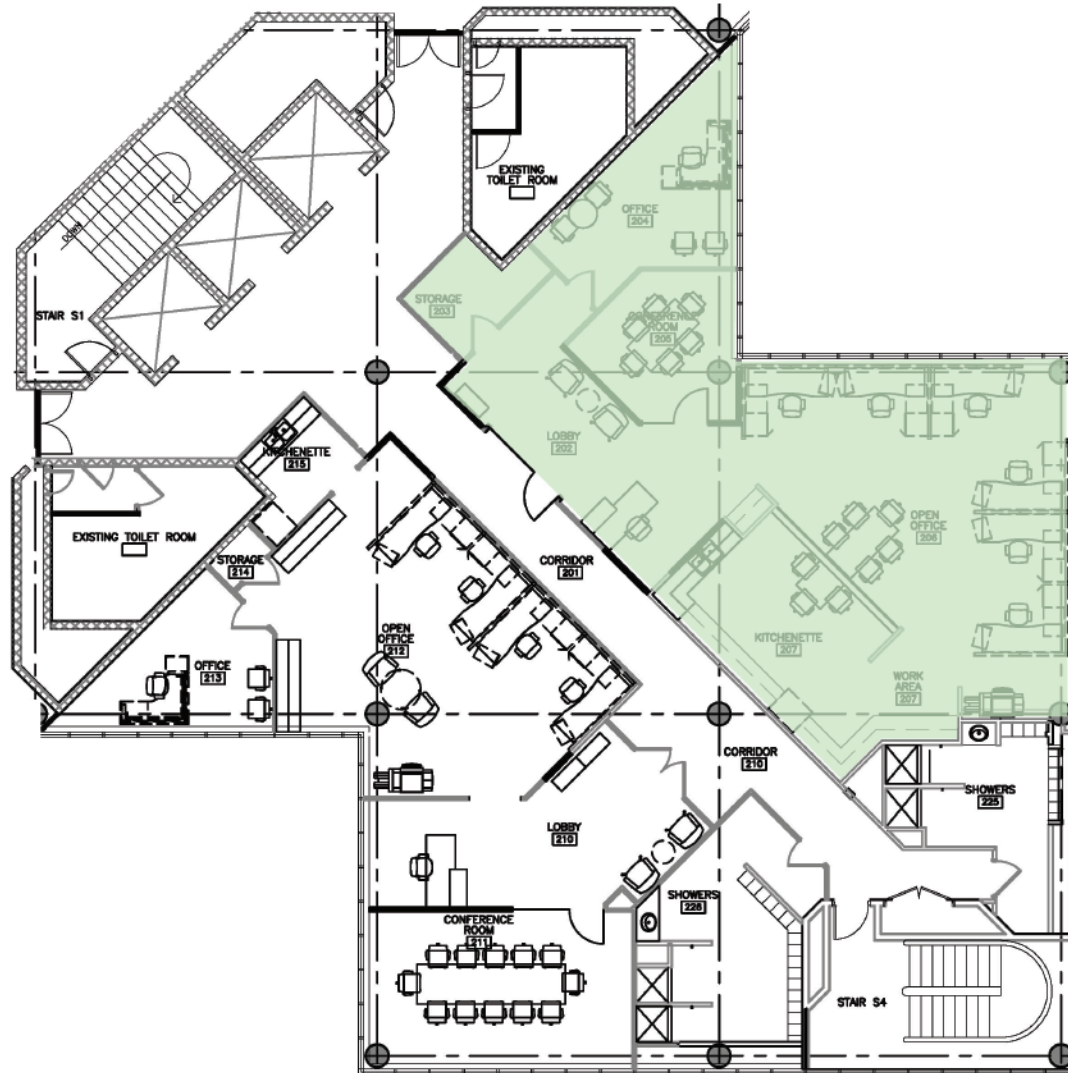
SQUARE FEET	1,765
SHARED OPEN OFFICES	4
EXTERIOR PRIVATE OFFICE	1
CONFERENCE ROOM	1
KITCHEN/BREAKROOM	1
COMMUNAL WORK AREA	1
RECEPTION/WELCOME	1
STORAGE ROOM	1
ADJACENT RESTROOMS	
LAKE VIEWS	
ABUNDANCE OF NATURAL LIGHT	

SUITE 2300 - CONCEPTUAL

VEREX PLAZA | 150 EAST GILMAN STREET
MADISON, WI

CONCEPT FEATURES

SQUARE FEET	2,045
SHARED OPEN OFFICES	6
EXTERIOR PRIVATE OFFICES	1
CONFERENCE ROOM	1
KITCHEN/BREAKROOM	1
COMMUNAL WORK AREA	1
RECEPTION/WELCOME	1
STORAGE ROOM	1
ADJACENT RESTROOMS	
CAPITOL VIEWS	
ABUNDANCE OF NATURAL LIGHT	



GILMAN STREET

CONTACT US

VEREX PLAZA | 150 EAST GILMAN STREET
MADISON, WI



Corey Kautzky, CRRP
Vice President
D: (608) 665-1230
ckautzky@fioreco.com



Lindsay Kruger, MBA
President
D: (608) 665-1233
lkruger@fioreco.com



fiorecompanies.com | (608) 255-5060 | 

STATE OF WISCONSIN BROKER DISCLOSURE TO NON-RESIDENTIAL CUSTOMERS

Prior to negotiating on your behalf, the brokerage firm, or an agent associated with the firm, must provide you the following disclosure statement:

DISCLOSURE TO CUSTOMERS

You are a customer of the brokerage firm (hereinafter Firm). The Firm is either an agent of another party in the transaction or a subagent of another firm that is the agent of another party in the transaction. A broker or a salesperson acting on behalf of the Firm may provide brokerage services to you. Whenever the Firm is providing brokerage services to you, the Firm and its brokers and salespersons (hereinafter Agents) owe you, the customer, the following duties:

- The duty to provide brokerage services to you fairly and honestly.
- The duty to exercise reasonable skill and care in providing brokerage services to you.
- The duty to provide you with accurate information about market conditions within a reasonable time if you request it, unless disclosure of the information is prohibited by law.
- The duty to disclose to you in writing certain Material Adverse Facts about a property, unless disclosure of the information is prohibited by law (see "DEFINITION OF MATERIAL ADVERSE FACTS" below).
- The duty to protect your confidentiality. Unless the law requires it, the Firm and its Agents will not disclose your confidential information or the confidential information of other parties. (see "CONFIDENTIALITY NOTICE TO CUSTOMERS" below).
- The duty to safeguard trust funds and other property held by the Firm or its Agents.
- The duty, when negotiating, to present contract proposals in an objective and unbiased manner and disclose the advantages and disadvantages of the proposals.

Please review this information carefully. An Agent of the Firm can answer your questions about brokerage services, but if you need legal advice, tax advice, or a professional home inspection, contact an attorney, tax advisor, or a home inspector.

This disclosure is required by section 452.135 of the Wisconsin statutes and is for information only. It is a plain-language summary of the duties owed to a customer under section 452.133(1) of the Wisconsin statutes.

CONFIDENTIALITY NOTICE TO CUSTOMERS

The Firm and its Agents will keep confidential any information given to the Firm or its Agents in confidence, or any information contained by the Firm and its Agents that a reasonable person would want to be kept confidential, unless the information must be disclosed by law or you authorize the Firm to disclose particular information. The Firm and its Agents shall continue to keep the information confidential after the Firm is no longer providing brokerage services to you.

The following information is required to be disclosed by law:

1. Material Adverse Facts, as defined in Wis. Stat. § 452.01(5g) (see "Definition of Material Adverse Facts" below).
2. Any facts known by the Firm or its Agents that contradict any information included in a written inspection report on the property or real estate that is the subject of the transaction.

To ensure that the Firm and its Agents are aware of what specific information you consider confidential, you may list that information below (see "CONFIDENTIAL INFORMATION" and "NON-CONFIDENTIAL INFORMATION" below). At a later time, you may also provide the Firm or its Agents with other Information you consider to be confidential.

CONFIDENTIAL INFORMATION: _____

NON-CONFIDENTIAL INFORMATION (the following information may be disclosed by the Firm and its Agents): _____

(Insert information you authorize to be disclosed, such as financial qualification information.): _____

NOTICE ABOUT SEX OFFENDER REGISTRY:

You may obtain information about the sex offender registry and persons registered with the registry by contacting the Wisconsin Department of Corrections on the Internet at <http://www.doc.wi.gov> or by telephone at 608-240-5830.

DEFINITION OF MATERIAL ADVERSE FACTS:

A "Material Adverse Fact" is defined in Wis. Stat. § 452.01(5g) as an Adverse Fact that a party indicates is of such significance, or that is generally recognized by a competent licensee as being of such significance to a reasonable party, that it affects or would affect the party's decision to enter into a contract or agreement concerning a transaction or affects or would affect the party's decision about the terms of such a contract or agreement.

An "Adverse Fact" is defined in Wis. Stat. § 452.01(1e) as a condition or occurrence that a competent licensee generally recognizes will significantly and adversely affect the value of the property, significantly reduce the structural integrity of improvements to real estate, or present a significant health risk to occupants of the property; or information that indicates that a party to a transaction is not able to or does not intend to meet his or her obligations under a contract or agreement made concerning the transaction.

No representation is made as to the legal validity of any provision or the adequacy of any provision in any specific transaction.

